

# RÉVO

ELECTROMECHANICAL GEAR MOTOR WITH ARTICULATED ARM FOR SWING GATES WITH LEAVES UP TO 2,3 m, 24 Vdc



The product combines a lighting system with an articulated arm gear motor. Designed for swing gates up to 2.3 metres in width.

Ideal for narrow columns or pillars with reduced dimensions. Compact shape and silent movement, made of strong die-casting aluminium and UV resistant covers

The articulated arm allows the installation of RÉVO in all those difficult situations where there is a significant depth between the leaf and the column, or with very narrow columns (10x10 cm). Available in two versions, with articulated arm or sliding arm for reduced openings

The unlocking system is simple and intuitive, also possible using the transmitter Sub.

The installation of the motor is also eased by the front and rear brackets located at the same level

Back-up battery (optional) on board

Double mechanical stop included



Stylish design screwless at sight



Possibility to unlock motor with transmitter





Compact dimensions (width 12 cm)



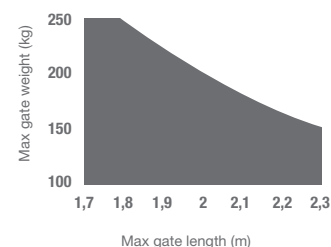
Built-in limit switches

# MODELS

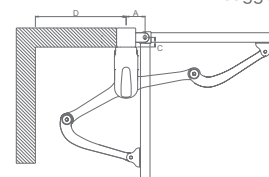
CODE	DESCRIPTION
 REV2024	For swing gates with maximum length 2,3 m or weight 250 kg, 24 Vdc motor
 REV2024S	For swing gates with maximum length 2,3 m or weight 250 kg, 24 Vdc motor. Without control unit

		REV2024	REV2024S
<b>MECHANICAL DATA</b>			
torque	Nm	120	120
working cycle	%	80	80
opening time at 90°	sec	14-20	14-20
<b>ELECTRICAL DATA</b>			
control board		14A	-
power	Vac	230	-
	Vdc	-	24
consumption	A	0,6	2
absorbed power	W	115	50
integrated lights		yes	yes
<b>GENERIC DATA</b>			
protection degree	IP	44	44
dimensions (L - D - H)	mm	120 - 250 - 350	120 - 250 - 350
weight	kg cad	10,5	8
working temperature	°C	-20 + 55	-20 + 55
leaves maximum weight	Kg	250	250

## LIMIT USE



Gate shape and height and weather conditions can considerably reduce the values shown above, in the graph. 230 Vac motors are suggested for windy areas



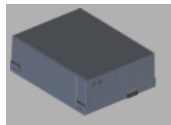
A min	100
C max	200
D min	450

## ACCESSORIES



**EL5-C**  
Horizontal 12 V  
electrolock

PC 1



**KBP**  
Battery back-up  
kit

PC 1



**DYL**  
Display module  
Cable length  
120 cm (only 14A)

PC 1



**REV1**  
Slide arm

PC 1

# AUTOMATIC SOLUTIONS