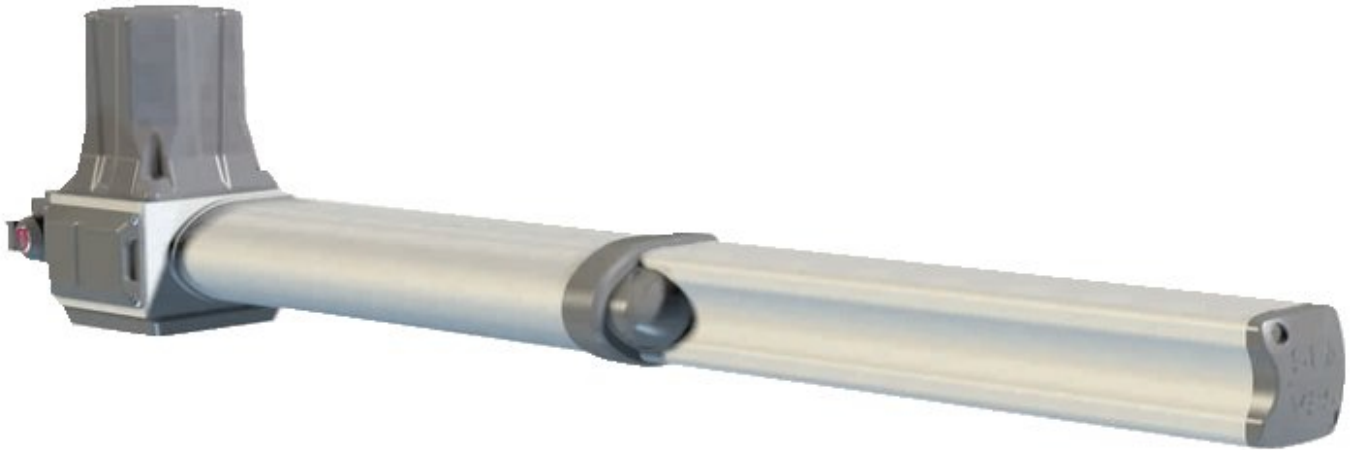
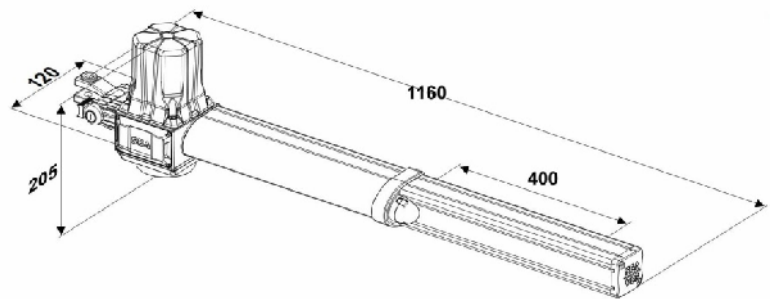


ALPHA Swing Gate Motor



The ALPHA is a high quality electromechanical operator for swing gates with a leaf to 3300mm long. Powered by 24 volt direct current motor the ALPHA is both powerful and efficient and can be easily adapted for a solar power installation. The ALPHA has manual key override and inbuilt limit switches which make it ideal for many difficult site installations as it is possible to use the ALPHA without gate stops. Now whilst we do not recommend installing without physical stops there is the odd occasion where it is necessary and the ALPHA makes it possible.



TECHNICAL SPECIFICATIONS

| | |
|-----------------------|--------------------------|
| POWER SUPPLY | 240 Volts AC |
| MOTOR POWER | 24 Volts DC – 70 Watts |
| SHAFT STROKE | 400 mm |
| CYCLES / HOUR | 40 |
| OPERATING TEMPERATURE | -20C to +55C |
| WEIGHT | 9.5 kg |
| MAXIMUM LEAF LENGTH | 3.3 Metres |
| OPENING DEGREES | 90 – 120 Degrees |
| SHAFT SPEED | 1.7 centimeters / second |
| PROTECTION CLASS | IP54 |
| MAXIMUM THRUST | 350 daN |



www.automaticsolutions.com.au